

Tł̄chq̄ Ndek'àowo



Tł̄chq̄ Government

# Dinàgà Wek'èhodì\*

\* to be looked after, to be kept protected

Dinàgà Wek'èhodì is an area of approximately 790 km<sup>2</sup> of the northern portion of the north arm of Great Slave Lake and includes the mainland shoreline, numerous islands, and the water of the lake itself.

## PROTECTING THE NORTH ARM

**Thursday, November 24, 2016  
12-1pm at Behchokò Culture Centre**

Presentation about Dinàgà Wek'èhodì.  
Lunch Provided. All are welcome.

*“On all of those islands there are places where we spent time and worked with our relatives. There are many old campsites on them. In the fall time people lived on those islands to gather fish. The land is beautiful that is why we want to talk about it.”*

Quote from Harry Apples, K'ichì Traditional Knowledge Study, 2015.

**For more information contact:**

Jessica Hum, Land Use Planner,  
Department of Culture &  
Lands Protection

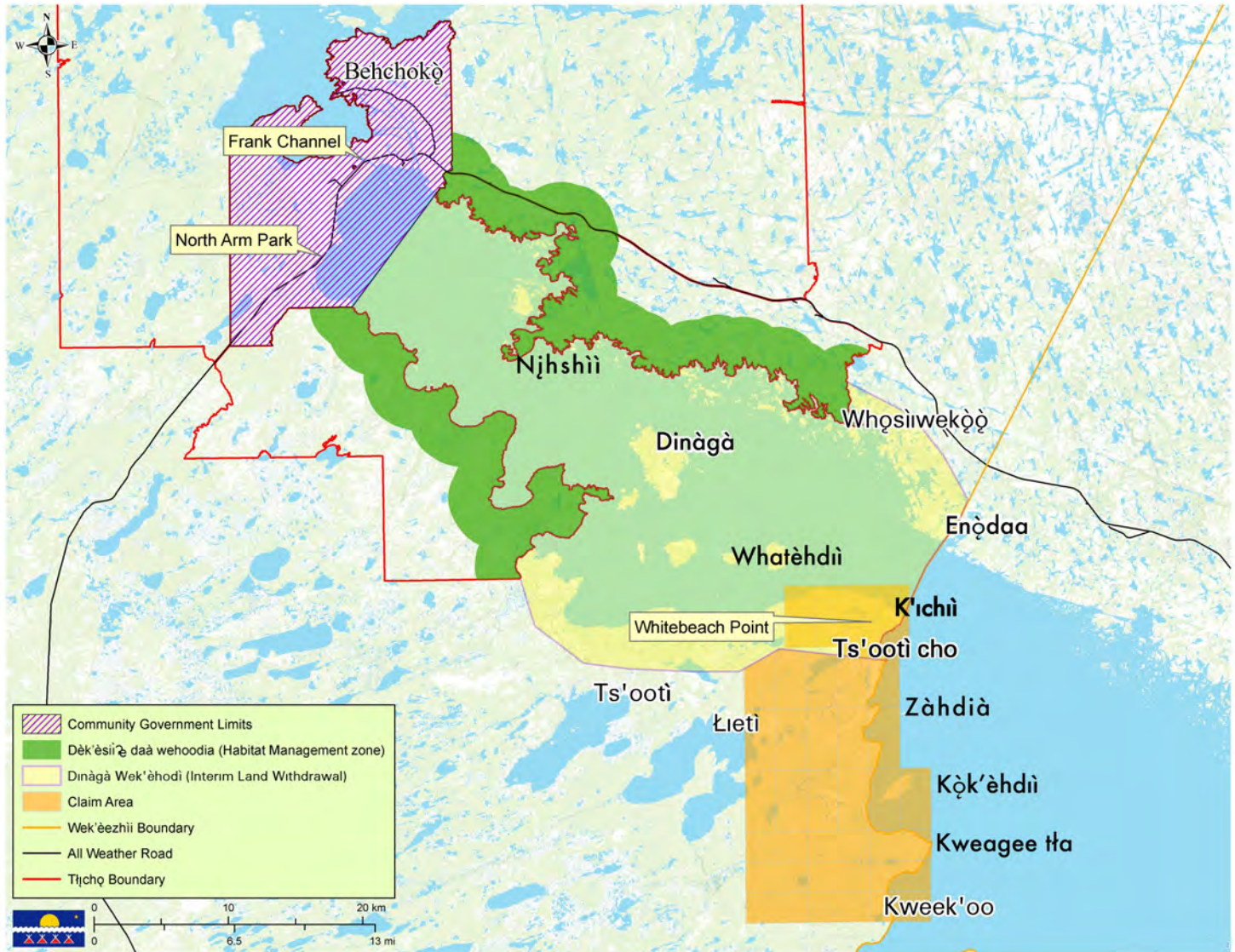
Tł̄chq̄ Ndek'àowo / Tł̄chq̄ Government  
Phone: 867-392-6381, ext. 1356



# Dinàgà Wek'èhodì\*

\* to be looked after, to be kept protected

For the Tłìchq, the North Arm of Great Slave Lake is a place of legends. Elders tell stories of Yamozha – the powerful Dene medicine man – who once pulled the land apart, creating the islands throughout the North Arm.



## Next Steps

Collaborative discussions on the establishment of Dinàgà Wek'èhodì using territorial legislation are ongoing.

The GNWT is committed to working directly with Aboriginal governments and organizations, key stakeholders and the public throughout the establishment process.

## Status

The Dinàgà Wek'èhodì Working Group was established in December 2010.

Assessments of the area's ecological, cultural and economic values have been completed and a work group report finalized (March 2016).

A surface and subsurface interim land withdrawal exists for Dinàgà Wek'èhodì until October 9th 2018.