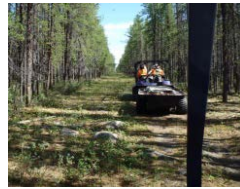


Tłıchǫ All-Season Road. Hwy 3 to Whatı.



This newsletter, by the GNWT Department of Transportation and the Tłıchǫ Government, is one in a series about the proposed Tłıchǫ All-season Road (TASR). It is meant to provide Tłıchǫ community members with information about the project. Each newsletter focuses on a different topic and highlights the various processes that will limit environmental and social impacts to the surrounding area from the construction of the road.

Community Consultations

GNWT and Tłıchǫ Government have worked together on planning for the TASR. This has included hosting many meetings in the communities, including sessions in Whatı, to discuss road options, hear about impacts and discuss commitments to programs and services. Traditional knowledge and social impact reports have been developed by the Tłıchǫ Government (tlicho.ca/all-season-road). Detailed community summaries are available in the TASR Engagement Record (Appendix E of Project Description Report).

Brief Summary of some of the Community Meetings	
Feb-June 2008: Tłıchǫ Winter Road Realignment Community Meetings in Whatı, Behchokǫ, Gamèti, Wekweèti, Yellowknife	Jun 2015: Whatı Special Interagency Committee
2009-2013: Tłıchǫ Executive Council Meetings	Jan 2016: Community Consultation Meetings in Wekweèti, Gamèti, Whatı, Behchokǫ
August 2013: Whatı Community Government Meeting (Whatı)	May 4, 2016 (upcoming): Whatı Special Interagency Committee
Sept 2013: Whatı Road Community Consultation Meeting (Whatı)	

Summary of Topics Raised

Concerns

- Increased distance to northern Tłıchǫ communities
- Concerns about caribou impacts
- Increased access to fisheries
- Concerns for social issues, such as more access to drugs and alcohol
- Wildlife and environmental effects
- Increased industrial development
- Community security, housing and social well-being

Opportunities

- Economic development, such as restaurants and hotel
- Tłıchǫ All-season Road positive solution to climate change challenges
- Employment and training potential
- Reduced cost of living
- Longer windows of time for winter roads to Gamèti and Wekweèti – improved access
- Increased mobility for students for sports and recreation

Mitigation measures that will be applied during construction that address the above topics will be discussed in future newsletters. Stay tuned to find out more!

For more information, please contact:

Sjoerd van der Wielen

Manager, Lands Section
Dept of Culture and Lands Protection
Tłıchǫ Government
(867) 392 6381 ext 1351

Michael Conway

Regional Superintendent
Department of Transportation
Government of the Northwest Territories
(867) 767-9089 ext 31194

